

Champion Gasket

Style 54 Super

HIGH PRESSURE APPLICATIONS COMPRESSED FIBRE GASKET



Premium grade fibre with heat resisting fillers and binders

Champion Style 54 Super Gasket is a premium grade high temperature, pressure resistance compressed fiber jointing sheet manufactured with a proprietary formulation of premium quality raw materials.

Champion Style 54 Super Gasket is available in non-metallic and also in metallic option i.e with steel wire reinforced gauze insertion (min 18 mesh x 30 gauge) and supplied with smooth anti stick Graphite finish on the top. This grade is produced in yellow (non metallic) and graphited black color.

Applications: Champion Style 54 Super Gasket has can be used as high performance jointing sheet primarily a super heated steam gasket.

Preferred as gasket of industry choice for boiler applications, air separation units, petroleum distillates, oil refineries, diesels generators, marine engines etc.

Service Media: Super heated steam, vaccum, hydrocarbons, gases, solvents, alcohols, dyes etc.

How Supplied:

Sheets, pre-cut gaskets, special density, thickness, shape or grade available on request.

Sheet ordering information	
Available Sheet Sizes in mm (+/- 5%)	1600 mm x 4000 mm
	1500 mm x 2000 mm
	1600 mm x 2000 mm
	2000 mm X 6000 mm
Thickness (mm)	0.5 mm; 0.75 mm; 1.0 mm; 1.5 mm; 2.0 mm; 3.0 mm; 4.0 mm**; 5.0 mm**

Typical Physical Properties:

Description	Standard Specs	Typical Values
Density	DIN 28090-2	2.0-2.2 g/cm ³
Tensile Strength	IS 2712:1998	≥28 MPa /280 Bar (4061 psi)
Compressibility	ASTM F 36	7% to 11%
Stress Relaxation	@40 MPa16 hr/300°C-IS 6210	≥28 MPa /280 Bar (4061 psi)
Gas Permeability	BS 7531	<0.5 cc/min
Recovery	ASTM F 36	≥50%
Ignition Loss	DIN 52911	≤25%



CHAMPION SEALS INDIA PRIVATE LIMITED SEALANT & GASKET INDIA PRIVATE LIMITED

Champion House, 15 Parsi Panchayat Road, Andheri (East), Mumbai – 400069. India
 Product Inquiry : info@championseals.in
 Customer Care Number: +91 98201 71162
 Website : www.championseals.in



TEMPERATURE

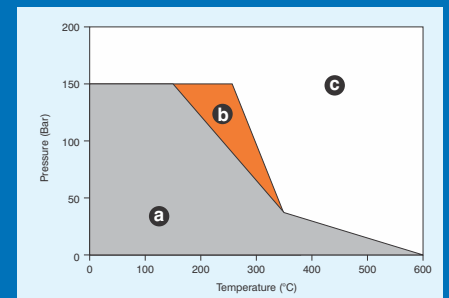
Maximum Continuous Service Temperature:
 550°C / 1022°F - Non Metallic
 600°C / 1112°F - Metallic



PRESSURE

Maximum Pressure:
 15 MPa / 150 Bar (2175 psi)
 - Non Metallic
 16 MPa / 160 Bar (2330 psi)
 - Metallic

CHAMPION STYLE 54 HIGH PRESSURE / TEMPERATURE LIMITS



Guidelines for application:

- Suitable subject to chemical compatibility.
- Suitable for short term temperature fluctuation or non critical application.
- For extreme service conditions, kindly consult Champion Technical Support.

APPROVALS / COMPLIANCE

Compliance with
 IS 2712- 1998 W/1 & O/1,
 DGS & DG/MISC/81-C
 BS 2815-1973 Grade A

*Kindly consult Champion Technical Support for all critical applications.

**Available only in 1600 X 4000 / 1600 X 2000 mm